

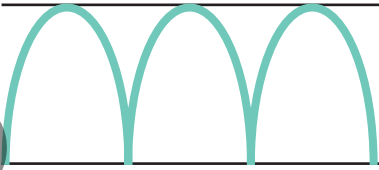


JUAN A. GARCÍA NÚÑEZ

# HABILIDADES GRAFOMOTORAS Y PREESCRITURA



FUNDACIÓN  
CITAP



ñ

eñ

iñ

uñ

oñ

añ

leel

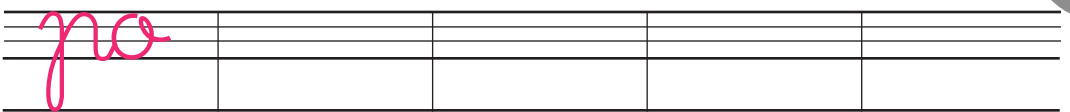
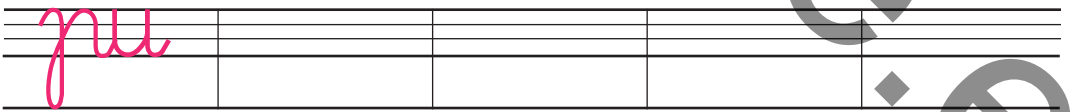
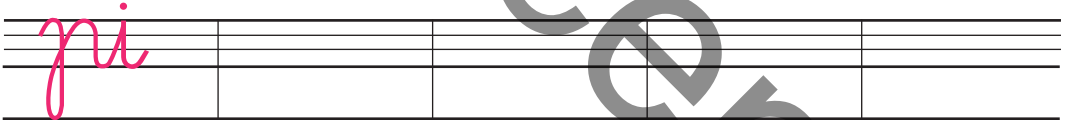
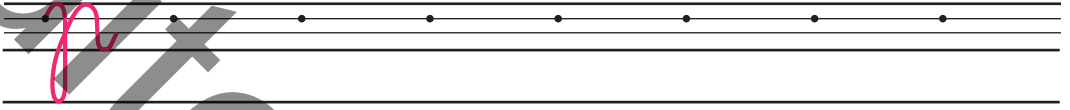
l

l

le

li

lu





**CIENCIAS DE LA EDUCACIÓN PREESCOLAR Y ESPECIAL, S.L.**

General Pardiñas, 95 - 28006 Madrid

Telfs.: (+34) 91 562 65 24 · (+34) 91 564 03 54 · ☎ (+34) 717 77 95 95

[clientes@editorialcepe.es](mailto:clientes@editorialcepe.es)

[www.editorialcepe.es](http://www.editorialcepe.es)



**FUNDACIÓN CITAP**

Orientaciones de intervención pedagógica

[fundacioncitap.com/graph](http://fundacioncitap.com/graph)

[www.fundacioncitap.com](http://www.fundacioncitap.com)



9 788416 941582