



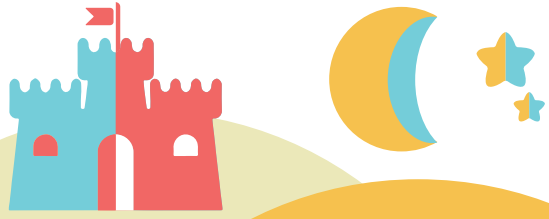
JUAN A. GARCÍA NÚÑEZ

HABILIDADES GRAFOMOTORAS Y PREESCRITURA



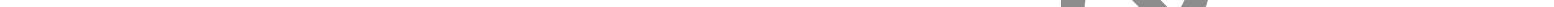
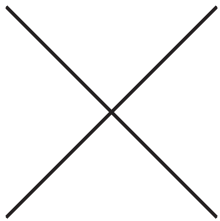
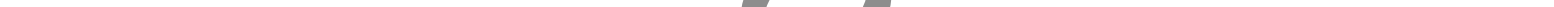
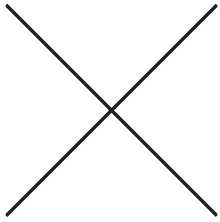
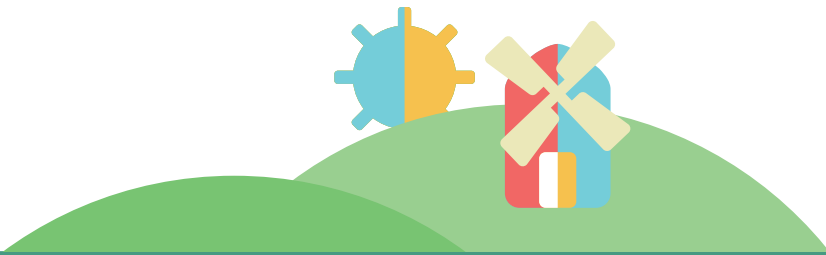
FUNDACIÓN
CITAP

Editorialcep.es

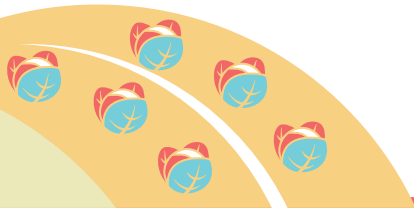


A large rectangular area with a yellow border containing a dotted grid for handwriting practice. The grid is composed of 10 horizontal rows and 20 vertical columns of dots. A yellow arrow points downwards to the second dot in the fifth column of the second row. The first two rows are partially filled with solid lines: the first row has a solid top line, and the second row has a solid middle line. The remaining rows are empty dotted lines.

Editorialcapes.es



Edutopia Original Content



Handwriting practice sheet with four rows. Each row features a red arrow pointing down and to the right, followed by a dotted line for tracing. The rows are separated by horizontal red lines.



CIENCIAS DE LA EDUCACIÓN PREESCOLAR Y ESPECIAL, S.L.

General Pardiñas, 95 - 28006 Madrid

Telfs.: (+34)91 562 65 24 · (+34)91 564 03 54 · (+34)717 77 95 95

clientes@editorialcepe.es

www.editorialcepe.es



FUNDACIÓN CITAP

Orientaciones de intervención pedagógica

fundacioncitap.com/graph

www.fundacioncitap.com

